

## Sponsored Thesis Project Competition on "Re-imagining Urban Rivers"

From birds of passage to guardians of rivers: Engaging and engrossing the tribal nomads and indigenous people of Pahalgam in overseeing and management the sacred River Lidder, along the way to the holy Amarnath Cave.

Student Name: MUBASHIR ARSHID  
Course Discipline: BTECH IN CIVIL ENGINEERING

### INTRODUCTION & BACK GROUND

#### Significance of River Lidder:

- acts as a source of potable water for Yatris enroute Amarnath cave.
- Provides livelihood to 2659 households.
- For Pujan and Visarijan ceremonies.
- as the camping sites by the migratory tribals.



### CAUSES OF POLLUTION AND IMPROPER MANAGEMENT OF RIVER LIDDER

- The hectic pace of urbanization among the indigenous people.
- Wallowing/ bathing of animals in the river.
- Open defecation and urination into the river.
- Dumping of dead animals into the tributaries of the river.
- Household waste dumping along the riverside.
- only 3% of general households are equipped with door to door waste collection system



### KEY ISSUES AND ANALYSIS

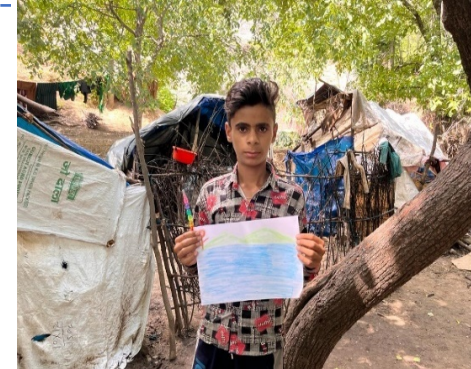
- Educating and training the tribals about river management and water sampling and testing.
- Tribals as macro-plastic samplers.
- Formulation of 4-pillar engagement model.
- Assessing the reason for involuntary participation by tribals in river management practices.
- Sustaining the developed tribal framework.



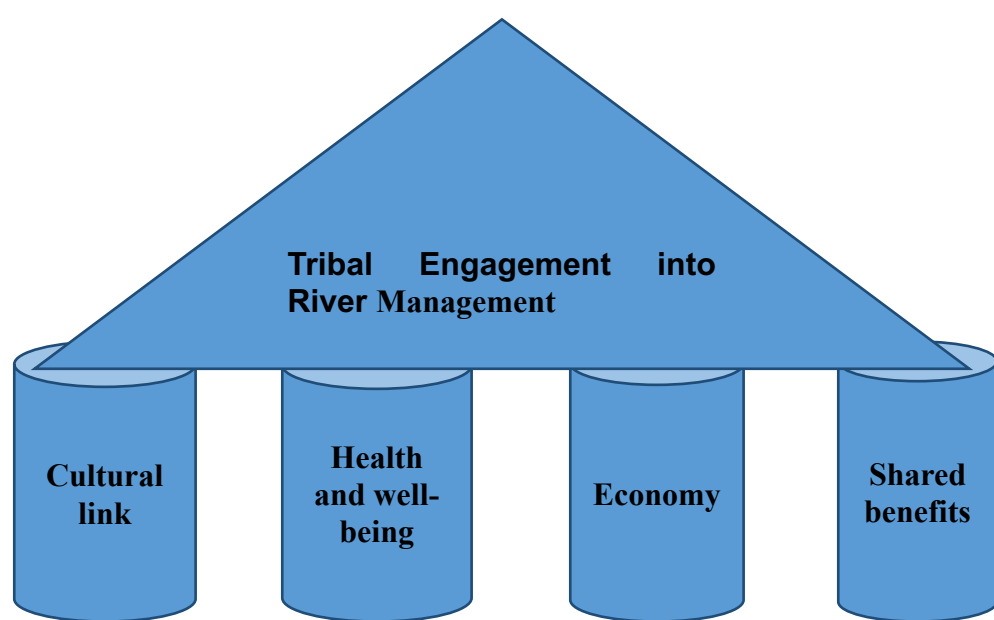
Calendar distribution



Verbal discussions with tribal leaders



River related drawing event for children



4-pillar engagement model



Net and bottle designed for sampling solid waste and water

Sample collecting bottle

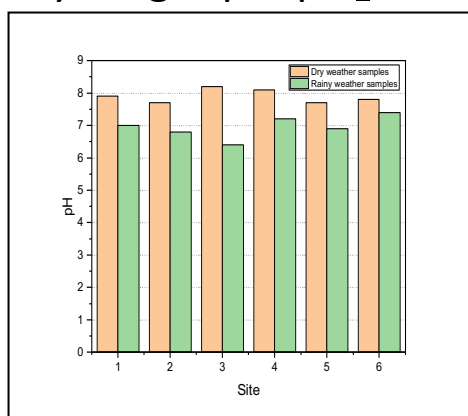
Net of given capacity to collect the macro plastics

Name	
From how many Years have you been migrating to Pahalgam in summers	
Any knowledge about the deteriorating condition of the river	
Ever participated in river management practices	
Approached by any organization in relation to river conservation	
What according to you could be done to safeguard the river lidder	

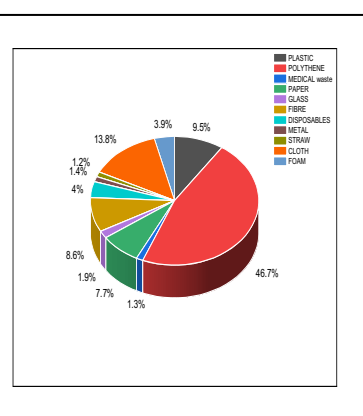
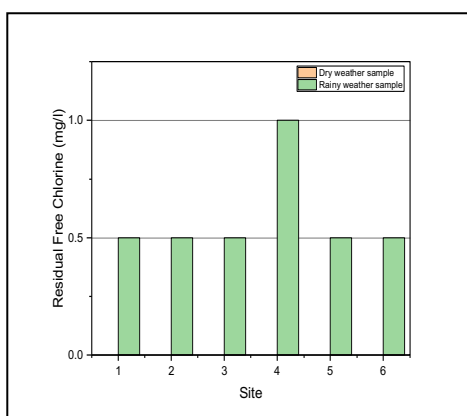
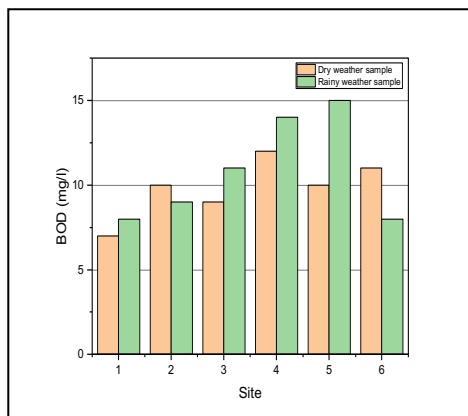
Survey questionnaire for assessing the reason for involuntary participation by the tribals

### OUTCOMES AND WAY FORWARD

- Improved tribal participation after progressive workshops.
- More thrust to be given on engaging younger people.
- Banning or restricted use of polythene and plastics.
- Lacuna between the tribals and organizations .
- Tribal knowledge to be given an equal standing.



Graphical representation of water quality tests



Solid waste % weight wise composition



River clean-up drive results for a selected stretch of river